



CAMP XAKANAXA

Moremi Game Reserve, Okavango Delta



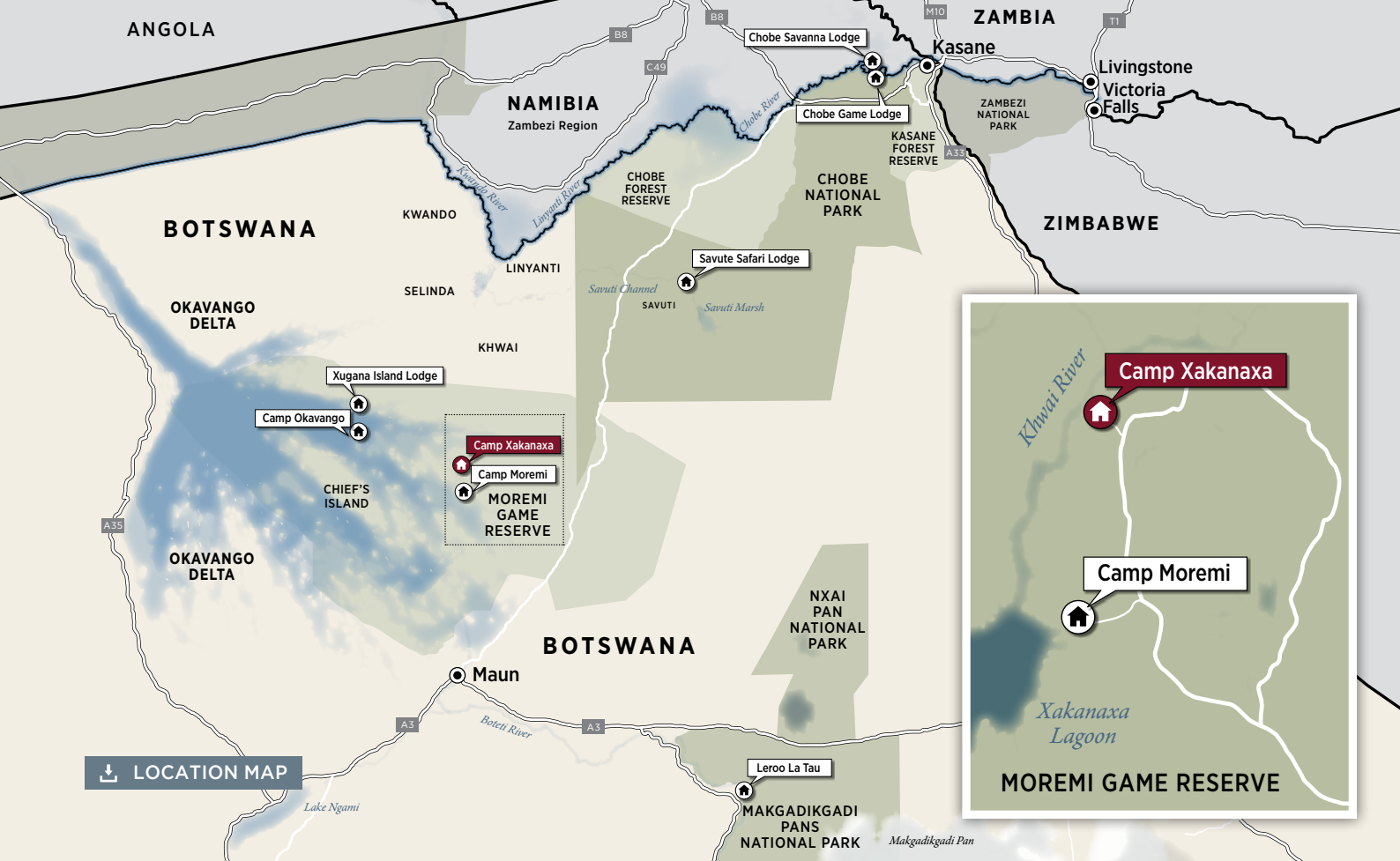
Empowering Botswana Through Tourism

CAMP OKAVANGO | XUGANA ISLAND LODGE | CAMP MOREMI | CAMP XAKANAXA
CHOBE GAME LODGE | SAVUTE SAFARI LODGE | CHOBE SAVANNA LODGE | LEROO LA TAU



www.desertdelta.com

OCTOBER 2020



The prime location of Camp Xakanaxa (pronounced Ka-ka-na-ka) on the banks of the Khwai River on the Xakanaxa Lagoon, in the heart of the Moremi Game Reserve, makes it one of the very few safari camps that offers guests an authentic, year-round Okavango Delta land and water safari experience.





THE CAMP

FACILITIES

ROOMS	11 Twin bedded luxury tents and 1 Family tent (consisting of 2 bedrooms, both en-suite) accommodating a maximum of 24 guests.
PILOT/GUIDE	1 x Pilot/Guide Tent (not same standard as guest rooms).
RATES	Fully inclusive of all meals, scheduled safari activities, local drinks (including alcoholic drinks, excluding premium brands) and park entrance fees.
DINING	Various indoor and outdoor dining locations.
CAMP FIRE	Extends over the Khwai River and creates an enchanting environment in which to relax after dinner.
SWIMMING POOL	Large swimming pool with an elevated sun deck in the expansive grounds
VIEWING DECK	Expansive sundeck to maximize the views of the surrounding lagoons and islands.
BAR	Fully stocked self service bar.
CURIO SHOP	Accepts cash and credit card payments.
LAUNDRY	Daily, inclusive laundry service available.
WATER	Reverse osmosis water treatment plant supplies drinking water (bottled water on request).
ELECTRICITY	Operates on AC 220V generator power during the day and evening. The generator is switched off at night and inverted 12-volt DC lighting provides room and bathroom illumination overnight. 220V AC plug's available in guest rooms.
WI-FI	Connection to Wi-Fi is available in the rooms only. Wi-Fi is via remote satellite link up and constant connectivity is not guaranteed.
TELEPHONE	No telephone communication available. The lodge has a satellite phone and radio for emergencies.
CHILDREN	Children from 6 years and older. See Desert & Delta Safaris child policy for more information.



 [CAMP IMAGES](#)



ACCOMMODATION

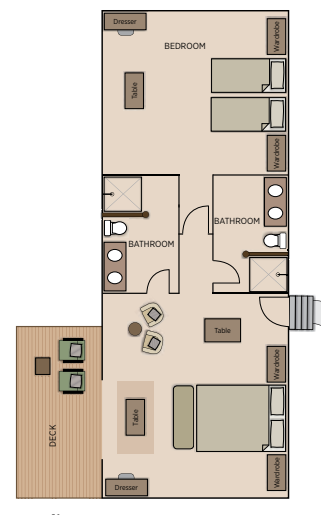
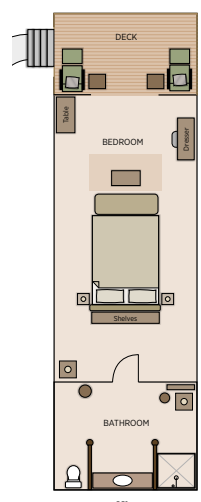
The camp accommodates twenty-four guests in twelve spacious all-canvas, classic Meru-style luxury safari tents, with en suite showers, hand basins and toilet facilities. Situated around the fringe of the lagoon, Camp Xakanaxa is one of the few camps in Botswana which still offers the essence of a classic tented camp.



ROOM FACILITIES	
RAISED DECKS	Meru-style luxury safari tents.
PRIVATE VIEWING DECK	Situated around the fringe of the lagoon with comfortable loungers to relax and enjoy the view.
EN-SUITE BATHROOM	En-suite showers, hand basin & toilet facilities.
FANS	Fans are available in all rooms - there is no air-conditioning in the rooms.
POWER	220V multi adaptor plugs for charging photographic equipment.
SAFE	Small pass-code protected safe for valuables.
FLASHLIGHT	For use in the rooms at night.
UMBRELLA	In case of rain.
AIR HORN	For use in case of an emergency.
HAIRDRYER	A small hairdryer is available in each room.
BATHROOM AMENITIES	A range of bathroom amenities including biodegradable soaps, shower gels etc.
TEA & COFFEE FACILITIES	A small kettle with tea and coffee available.

STANDARD ROOM

FAMILY ROOM



[CAMP IMAGES](#)




[PLANS](#)





ACTIVITIES

The ancient riverine forests, open savannah, serpentine channels and seasonal flood-plains that surround the camp make for a varied habitat of exceptional fauna and flora. The camp is one of few offering a year-round land and water game-viewing experience.

	GAME DRIVES	Morning and afternoon game drives to explore the many different ecosystems that the Moremi Game Reserve has to offer.
	MOTORISED BOAT SAFARIS	Guided excursions through the deeper channels and lagoons of the Okavango Delta in hard-bottom aluminum boats. The boats are equipped with comfortable seats, a foldaway canvas roof and life jackets.
	BIRD WATCHING	Birding is quite spectacular, especially during spring and summer when the migrants breed.

 EXPERIENCE IMAGES



TYPICAL DAY ON SAFARI

Please note the below suggested daily program is flexible based on the guests interests, travel times and availability of activities.

WINTER TIMES	SUMMER TIMES	ACTIVITY
05:30	05:00	Early morning wake-up call.
06:00	05:30	Light continental breakfast served in the dining area.
06:30	06:00	Leave for morning activity, (approximately 3 - 4 hours).
11:30	11:00	Brunch is served at the dining area.
SIESTA TIME		Relax and enjoy the lodge facilities and surroundings.
15:00	15:30	Afternoon tea is served on the open air patio.
15:30	16:00	Depart for afternoon activity (approximately 3 hours).
18:30	19:00	Arrive back at the lodge.
19:30	20:00	Dinner is served at the dining area.





ACCESS TO CAMP XAKANAXA

Camp Xakanaxa is accessed by light aircraft transfer or also suitable for 4WD vehicles only. The airstrip is owned by Desert and Delta Safaris, a Chobe Holdings Company. Flights to and from Camp Xakanaxa are scheduled based on the travellers itinerary. Once at the airstrip there is a short road transfer of approximately 25 minutes to camp.

AIRSTRIP DETAILS

STRIP GPS CO-ORDINATES	S19° 12' 51.85 E023° 25' 56.0
CAMP GPS CO-ORDINATES	S19° 10' 35.76 E023° 24' 32.58
LENGTH	900m
LICENSE	CAAB Licensed Class B airstrip accommodating aircrafts up to MAUW 5700kg's (Cessna Caravan).
PRIVATE CHARTERS	Prior consent from Desert & Delta Safaris is required before landing private aircraft on the airstrip.



ESTIMATED FLIGHT TIMES Between Camps & Airports

Maun

25	Camp Okavango					
30	5	Xugana Island Lodge				
20	10	10	Camp Moremi / Camp Xakanaxa			
40	30	25	25	Savute Safari Lodge		
30	45	45	40	50	Leroo La Tau	
70	60	60	55	30	65	Kasane

PLEASE NOTE: Drone use is strictly prohibited at Camp Xakanaxa and inside the Moremi Game Reserve, in accordance with National Park laws of Botswana.



Empowering Botswana Through Tourism

RESERVATIONS OFFICE

TELEPHONE [+267] 680 1494
E-MAIL info@desertdelta.com

View Desert & Delta Safaris Video

MARKETING OFFICE

TELEPHONE [+267] 686 1559
E-MAIL marketing@desertdelta.com
ADDRESS Private Bag 310,
Maun, Botswana

www.desertdelta.com